



# Water Polo

AUSTRALIA

## Membership and Registration Policy

**Version 9**

**Effective: 1 September 2025**

**Ref: WOG-011**

| # | Review Date        | Effective Date   | Approved By | Changes   |
|---|--------------------|------------------|-------------|---|
| 1 | 18 June 2018       | 1 July 2018      | Board       |   |
| 2 | 18 April 2019      | 1 July 2019      | Board       |   |
| 3 | 31 August 2020     | 1 September 2020 | Board       |   |
| 4 | 31 October 2020    | 1 November 2020  | Board       |   |
| 5 | 25 June 2021       | 1 September 2021 | Board       |   |
| 6 | June 2022          | 1 September 2022 | Board       |   |
| 7 | June 2023          | 1 September 2023 | Board       |   |
| 8 | June 2024          | 1 September 2024 | Board       |   |
| 9 | July / August 2025 | 1 September 2025 | Board       | Clarification, simplification and modernisation of policy. Addition of new membership types for 2025/2026. Was previously called the "Water Polo in Australia Membership and Registration Policy" |

*Review frequency: Annually, prior to commencement of new Membership Year*

# 1 Background

## 1.1 Purpose

This is a policy made by Water Polo Australia Limited (“WPA”) under its constitution (**Constitution**) with the purpose of establishing uniform structures, procedures, benefits, fees and rules of Membership in Australia. It was established in consultation with the State Members.

## 1.2 Scope

This Policy applies to any organisation or person participating in water polo in Australia, including State Members, AWL Members, Affiliate Members, Individual Members and Life Members.

# 2 Definitions

## 2.1 Defined Terms

The following words have the corresponding meaning in this Policy:

**Formal Competitions** are activities, events or competitions where three or more of the following criteria apply:

- (a) match points, competition ladder and finals;
- (b) formal competition rules or manual and eligibility rules exist for that competition;
- (c) relatively fixed teams from week to week as opposed to turn up and play with whoever is there;
- (d) official referees allocated; and
- (e) the competition is managed by WPA, a State Member or an Affiliate Member.

For clarity, the number of games or weeks played and the standard of competition, or the competitiveness of the participants, is not a factor in this definition.

**Informal Events** are:

- (a) activities, events or competitions that are not Formal Competitions; and
- (b) any new competition approved by WPA to be Informal Event after application by a State Member, if it can be demonstrated by the organiser that at least 50% of the participants in the competition will be new to the sport.

**National Capitation Fee** has the meaning given in clause 11.1.2.

**Sanctioned Events** means competitions, activities or programs:

- (a) conducted only within a school environment; or
  - (b) nationally identified programs, such as participation programs,
- as determined by WPA.

## 2.2 Terms defined in Constitution

Where a capitalised term is not defined in this Policy, but is defined in the Constitution, it has the meaning given in the Constitution.

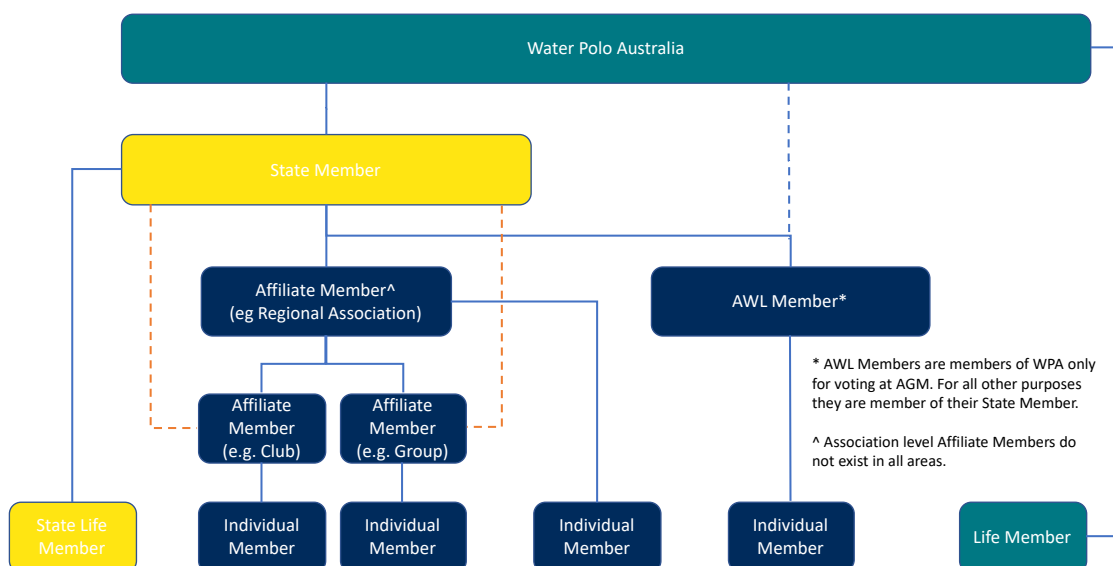
### 3 Membership Overview

#### 3.1 WPA Membership Model

3.1.1 The Constitution provides for the following categories of Member of WPA:

- (a) State Members;
- (b) AWL Members;
- (c) Affiliate Members;
- (d) Individual Members; and
- (e) Life Members.

3.1.2 Generally speaking, all Individual Members will register with WPA through an Affiliate Member (such as a club) who in turn is registered with WPA through a State Member (or alternatively through another Affiliate Member, such as a regional association, who is registered with WPA through a State Member). There are some exceptions to this, as set out in this Policy. An indicative overview of the Membership model is as follows:



3.1.3 This Policy sets out:

- (a) details of, and requirements for, each category of Member in sections 4 to 8;
- (b) benefits of Membership in section 9;
- (c) details regarding the WPA registration database in section 10;
- (d) annual Membership fees in section 11; and
- (e) certain non-member categories in section 12.

#### 3.2 Membership Term

3.2.1 The WPA Membership year is the period from 1 September to 31 August (**Membership Year**).

3.2.2 Where a State Member uses a different Membership Year (**State Membership Year**), Members must obtain a Membership with WPA in both Membership Years that fall within the State Membership Year or their Membership will lapse at the end of the first Membership Year. The

same applies if an AWL Member or Affiliate Member has a registration period that falls within multiple Membership Years.

### 3.2.3 Registration as a member of:

- (a) WPA is valid for a period of up to 12 months or until the end of the current Membership Year, whichever occurs first;
- (b) a State Member is valid for a period of up to 12 months or until the end of the current State Membership Year, whichever occurs first (subject to section 3.2.2); and
- (c) an AWL Member or Affiliate Member is valid for any period not exceeding 12 months (subject to section 3.2.2). For example, an Affiliate Member could have separate registrations for summer and winter competitions.

## 3.3 Membership Requirements

3.3.1 The Constitution sets out a process for admission to Membership and requirements that apply to Members. This includes that all Members are required to be subject to, and submit unreservedly to, the jurisdiction, procedures, penalties and appeal mechanisms of WPA whether under any Policies or under the Constitution, including accepting and agreeing to the discipline provisions in clause 15 of the Constitution.

3.3.2 This Policy sets out additional Membership requirements. Members may also be required to agree to additional requirements as part of registering with a State Member, AWL Member or Affiliate Member (as applicable).

## 4 State Members

### 4.1 Who are State Members?

4.1.1 State Members are organisations (not natural persons) recorded in the Register as State Members who have recognition as the organisation responsible for the administration of water polo within the whole of a particular Australian State or Territory.

### 4.2 Current State Members

4.2.1 As at the date of the adoption of this Policy, the State Members and their area of responsibility are:

| Organisation                 | Area of responsibility |
|------------------------------|------------------------|
| Water Polo ACT               | ACT                    |
| Water Polo New South Wales   | NSW                    |
| Water Polo Queensland        | QLD and NT             |
| Water Polo South Australia   | SA                     |
| Water Polo Tasmania          | TAS                    |
| Water Polo Victoria          | VIC                    |
| Water Polo Western Australia | WA                     |

### 4.3 State Member requirements

4.3.1 State Members must comply with applicable obligations in the Constitution (including clauses 10(a) and (b)), including the requirements in this Policy.

## **4.4 Retention of State Membership**

- 4.4.1 The Constitution sets out the requirements regarding termination or cessation of State Membership.

## **5 AWL (Australian Water Polo League) Members**

### **5.1 Who are AWL Members?**

- 5.1.1 AWL Members are organisations (not natural persons) that are a current financial member of a State Member and that:

- (a) at the relevant time hold a current licence from WPA to participate in the AWL; and
- (b) are admitted to and maintain Membership of WPA in that category in accordance with the Constitution and any relevant Policies.

### **5.2 Registration of AWL Members**

- 5.2.1 AWL Members are distinct from Affiliate Members due to their participation in the Australian Water Polo League and the additional rights under the Constitution (see section 9). Nevertheless, all AWL Members must register with WPA annually through the State Member that governs the geographic area of their primary registered address.

### **5.3 AWL Member requirements**

- 5.3.1 AWL Members must comply with applicable obligations in the Constitution (including clauses 10(a) and (b)), including the requirements in this Policy.

- 5.3.2 Additional AWL Member requirements are:

- (a) Membership as an AWL Member is required to be renewed each Membership Year;
- (b) AWL Members must require all members to register as Members of WPA and use the WPA database for registration;
- (c) Membership as an AWL Member will not be finalised until the organisation has:
  - (i) completed all online mandatory details in the WPA database (see section 10);
  - (ii) agreed to WPA's standard terms and conditions applicable to AWL Members for that Membership Year;
  - (iii) paid the relevant National Capitation Fee in full (if any) and any applicable State Member fees (see section 11); and
  - (iv) resolved all outstanding debts or disciplinary actions.

- 5.3.3 For clarity, AWL Members are also bound by the rules and requirements of the State Member that they register with.

### **5.4 Retention of AWL Membership**

- 5.4.1 An AWL Membership may be terminated if not renewed following the conclusion of the Membership Term and otherwise in accordance with the Constitution, which includes the application of any Policies from time to time (such as any complaints, grievance, integrity and disciplinary policies (available on the WPA website)).

## **6 Affiliate Members**

### **6.1 Who are Affiliate Members?**

- 6.1.1 Affiliate Members are organisations (not natural persons) with objects and interests which

align to and are not inconsistent with those of WPA and which meet the criteria in any relevant Policy, including this Policy.

- 6.1.2 Affiliate Members are typically organisations that conduct water polo and related activities, such as regional governing bodies or associations, clubs, schools and private providers.

## **6.2 Registration of Affiliate Members**

- 6.2.1 Subject to section 6.2.2, all organisations must register as an Affiliate Member through, and meet the criteria and requirements of, their applicable State Member, being the State Member that governs the geographic area of their primary registered address.

- 6.2.2 In some cases, Affiliate Members will register with their State Member through another Affiliate Member, for example, a club will register with a regional association that is registered with the State Member.

## **6.3 Affiliate Member requirements**

- 6.3.1 The Affiliate Member requirements include:

- (a) Membership as an Affiliate Member is required to be renewed each Membership Year;
- (b) Affiliate Members must require all members to register as Members of WPA and use the WPA database for registration;
- (c) Membership as an Affiliate Member will not be finalised until the organisation has:
  - (i) completed all online mandatory details in the WPA database (see section 10);
  - (ii) agreed to WPA's standard terms and conditions applicable to Affiliate Members for that Membership Year;
  - (iii) paid the relevant National Capitation Fee in full and any applicable State Member fees (see section 11); and
  - (iv) resolved all outstanding debts or disciplinary actions.

- 6.3.2 For clarity, Affiliate Members will also be bound by the rules and requirements of the State Member (and, if applicable, any other Affiliate Member) that they register with.

## **6.4 Retention of Affiliate Membership**

- 6.4.1 An Affiliate Membership may be terminated if not renewed following the conclusion of the Membership Term and otherwise in accordance with the Constitution, which includes the application of any Policies from time to time (such as any complaints, grievance, integrity and disciplinary policies (available on the WPA website)).

# **7 Individual Members**

## **7.1 Who are Individual Members?**

- 7.1.1 Individual Members are natural persons that are admitted to Membership of WPA and who are also a member of a State Member, AWL Member, Affiliate Member or other organisation which participates in water polo activities sanctioned or conducted under the auspices of WPA.

- 7.1.2 All people involved in or associated with water polo in Australia are required to become Individual Members.

## **7.2 Registration as an Individual Member**

- 7.2.1 Individual Members must register in a specified category, which entitles them to certain participation rights and benefits and are subject to different fees. The current categories and

participation rights are set out in Annexure A. Individuals can only register in the “Adult”, “Junior” and “School” sub-categories if they meet the specified age range in Annexure A.

- 7.2.2 Individual Members must also register as a member of at least one Affiliate Member or AWL Member (and through them, the relevant State Member), except where section 7.2.3 or 7.2.4 applies.
- 7.2.3 An Individual Member can, if permitted by the State Member, register directly with a State Member (with no affiliation with an Affiliate Member or AWL Member) if they have:
- (a) registered as a “Gold” category Individual Member and they are:
    - (i) a WPA-accredited (or in the process of becoming accredited) coach;
    - (ii) a WPA-accredited (or in the process of becoming accredited) referee; or
  - (b) a State recognised life member.
- 7.2.4 An Individual Member can, if permitted by WPA and in accordance with any requirements of WPA, register directly with WPA (with no membership of a State Member or affiliation with an Affiliate Member or AWL Member), where registration with a State Member and affiliation with an Affiliate Member or AWL Member is not appropriate in the circumstances.

### **7.3 Individual Member requirements**

- 7.3.1 The Individual Membership requirements include:
- (a) Membership as an Individual Member is required to be renewed for each Membership Year, by completing the online registration form and online payment;
  - (b) Membership as an Individual Member will not be finalised until the individual has:
    - (i) completed all online mandatory details in the WPA database (see section 10);
    - (ii) agreed to WPA’s standard terms and conditions applicable to Individual Members for that Membership Year;
    - (iii) paid the relevant National Capitation Fee in full and any applicable State Member fees (see section 11); and
    - (iv) resolved all outstanding debts or disciplinary actions.
- 7.3.2 For clarity, the Individual Members will also be bound by the rules and requirements of the State Member, Affiliate Member and/or AWL Member that they register with.

### **7.4 Retention of Individual Membership**

- 7.4.1 An Individual Membership may be terminated in the following situations:
- (a) If not renewed following the conclusion of the Membership Term;
  - (b) Upon notification of death;
  - (c) In accordance with the application of any Policies from time to time, including any complaints, grievance, integrity and disciplinary policies (available on the WPA website);
  - (d) In accordance with the application of any State Member policies, including the State membership disciplinary policy or sanctions; and
  - (e) In any other circumstance or for any other reason prescribed in the Constitution, rules or policies of WPA, the State Member or the Affiliate Member / AWL Member.

### **7.5 Multi-club relationships and changing clubs**

- 7.5.1 An Individual Member may be a member of more than one Affiliate Member, however the

first Affiliate Member they register with for that Membership Year will be considered their 'primary club'. All other memberships will be deemed 'secondary'.

- 7.5.2 If an Individual Member wishes to change/switch the Affiliate Member that is their 'primary club':
- (a) to a different Affiliate Member in the same State or Territory, they must contact their State Member to complete it in line with the State Member's policies and procedures; or
  - (b) to an Affiliate Member in a different State or Territory, they must contact the leaving State Member and initiate an inter-state transfer to be approved by both Affiliate Members / AWL Members and registered with WPA.
- 7.5.3 Individual Members should consider the eligibility requirements in the Tournament Eligibility Regulations for WPA sanctioned national events (available on the WPA website) when determining which Affiliate Member should be their 'primary club' and 'secondary club'.

## 7.6 Gender

- 7.6.1 Please refer to the WPA's policies relating to gender (available on the WPA website), which, as at the date of adoption of this policy, include the Guidelines for the Inclusion of Transgender and Gender Diverse People in Community Water Polo.

## 8 Life Members

### 8.1 Who are Life Members?

- 8.1.1 Life Members are persons who are admitted to Membership of WPA in that category in accordance with the Constitution. This is distinct from State Member recognised life members (**State Life Members**) or AWL Member / Affiliate Member recognised life members (**Affiliate Life Members**), which are admitted in accordance with the processes set out by those Members.

### 8.2 How do you become a Life Member?

- 8.2.1 Nominations for Life Membership with WPA must be lodged in accordance with the Constitution.
- 8.2.2 Following nomination, the Constitution sets out the process for consideration for admission to Life Membership.
- 8.2.3 The qualification criteria considered by the Board when considering whether a person qualifies to be appointed as a Life Member are set out in Annexure D.

### 8.3 Life Member Requirements

- 8.3.1 Life Members are, where relevant, subject to the requirements of Individual Members under this Policy. However, Life Members do not pay any National Capitation Fee.
- 8.3.2 Where relevant to their participation in the sport, Life Members must register through their State Member, AWL Member and Affiliate Member as normal.

### 8.4 State Life Members

- 8.4.1 WPA currently recognises the achievements of State Life Members and does not charge the National Capitation Fee to State Life Members that are registered as an Individual Member of WPA.

## **8.5 Affiliate Life Members**

- 8.5.1 While WPA congratulates the appointment of Affiliate Life Members, it does not recognise such achievement at the national level and these members must still register as an Individual Member and are subject to the National Capitation Fee.

## **9 Benefits of membership**

### **9.1 Meeting Attendance and Voting Rights**

- 9.1.1 Meeting attendance and voting rights are set out in the Constitution. As at the date of adoption of this Policy, the Constitution provides that:

- (a) State Members, AWL Members and Life Members are entitled to receive notice of meetings of WPA and attend and speak at (where applicable through their Member's Representative) these meetings. Other types of Members have no right to receive notices of meetings, or attend or speak at meetings, of WPA; and
- (b) only State Members and the representative of the AWL Voting Committee are Voting Members with voting rights.

### **9.2 Other benefits**

- 9.2.1 The WPA benefits currently attached to each type of Membership are set out in Annexure B.
- 9.2.2 Affiliate Members and AWL Members may also receive additional benefits from:
- (a) their State Member upon annual registration with the State Member at the discretion of the relevant State Member; or
  - (b) if they register through another Affiliate Member, that Affiliate Member, upon registration with the Affiliate Member at the discretion of the relevant Affiliate Member.
- 9.2.3 Individual Members and Life Members may also receive additional benefits from their State Member and/or Affiliate Member(s) / AWL Member upon registration with them at the discretion of the relevant Member.

## **10 Membership Registration Process**

### **10.1 Mandatory use**

- 10.1.1 All State Members, Affiliate Members and AWL Members must use the MemberPool database and collect/provide all information that WPA requires to be included in that database.
- 10.1.2 A register of Members of all categories and types must be kept and maintained within the MemberPool Database.

### **10.2 Gender Inclusive**

- 10.2.1 WPA, State Members, AWL Members and Affiliated Member participant/member registrations must be gender inclusive and align with the ACON's recommended sexuality and gender indicators.

### **10.3 Privacy**

- 10.3.1 WPA, the State Members, the AWL Members and the Affiliate Members must comply with the WPA Privacy Policy and the provisions of the Privacy Act 1988 (Cth), the Australian Privacy Principles (APPs) and the relevant legislation and regulations of the States and Territories when collecting, using and reporting on individual's data.
- 10.3.2 Members have the right to request a copy of the information held specific to themselves only,

in accordance with WPA's Privacy Policy.

## 10.4 Accuracy and duplication

10.4.1 Every entity and person bound by this Policy:

- (a) is responsible for the accurate input of, and maintenance, security and appropriate use of, data and records within the WPA database;
- (b) must use all reasonable endeavours to ensure data is not duplicated within the database; and
- (c) acknowledges that WPA and State Members may conduct random audits of Membership and affiliation records for accuracy of input data.

10.4.2 In the event of a change of any details inputted into the WPA database at any point in the Membership Year, it is the responsibility of the individual / entity to update the change in the database.

## 11 Membership and Affiliation Fees

### 11.1 Capitation Fees

11.1.1 A "capitation" is a mandatory fee included in a membership category to cover costs of administration and other services and benefits, such as, in the case of a WPA capitation fee:

- (a) the national insurance scheme;
- (b) national competitions, events and pathway programs;
- (c) facilitation and administration of water polo;
- (d) maintenance of the sports' rules, regulations and policies;
- (e) water polo development, including participation and development programs;
- (f) coach and official education programs;
- (g) digital services;
- (h) advocacy at national and international level; and
- (i) access to the Member benefits program.

11.1.2 The WPA national capitation fees for each category of Membership for the Membership Year specified is as per Annexure C (**National Capitation Fee**) regardless of how much of the Membership Year the registration is for. WPA reserves the right to change these fees at any point in time.

11.1.3 Each State Member, AWL Member and Affiliate Member may add additional capitation fees as deemed necessary.

11.1.4 Subject to section 11.1.5, WPA and a State Member's capitation fees are only payable once per Membership Year / State Membership Year (as applicable). For example:

- (a) an Individual Member will not have to pay the WPA and State Member capitation fees for a year again if they are moving to a new Affiliate Member with the same State Member and have already paid those capitation fees when registering with their existing Affiliate Member; and
- (b) an Affiliate Member may require an Individual member to register separately for the summer and winter seasons. An Individual Member would only be required to pay the WPA and State Member capitation fees portion of the registration fee once per year,

regardless of how many times they register for competitions in that year.

11.1.5 Individual Members will pay a further National Capitation Fee in a Membership Year:

- (a) if they acquire multiple limited scope Memberships; or
- (b) if they upgrade to a higher category of Membership, in which case they will pay the difference,

and would need to pay the capitation fees of multiple State Members if they transfer to a different State Member during a State Membership Year.

## **11.2 Payment of Capitation Fees – Affiliate Members / AWL Members**

11.2.1 Each Affiliate Member and AWL Member must pay the annual affiliation fee as set by the relevant State Member, which is to be inclusive of the applicable National Capitation Fee for each Membership Year, and must be paid electronically through the WPA MemberPool.

11.2.2 The National Capitation Fee for Affiliate Members and AWL Members is non-refundable, unless in the circumstances of technology malfunction.

## **11.3 Payment of Capitation Fees – Individual Members**

11.3.1 Each Individual Member must pay the relevant National Capitation Fee as a mandatory component of an individual's registration fee, usually with their Affiliate Member (or AWL Member or State Member, if applicable), each Membership Year, which must be paid electronically through the WPA MemberPool.

11.3.2 The National Capitation Fee for Individual Members is non-refundable except:

- (a) in the event of technology malfunction; or
- (b) if an Individual Member has not participated in training or playing whatsoever in the Membership Year due to illness or injury, in which case a full refund (excluding the WPA transaction fees) will be issued.

11.3.3 In the circumstances listed, but not limited to below, 100% of the National Capitation Fee will be retained:

- (a) the Individual Member has participated in training or playing and then elects to cancel their Membership due to injury or for any other reason;
- (b) the Individual Member elects to downgrade their level of Membership; or
- (c) the Individual Member changes their mind and no longer wishes to participate in the sport.

11.3.4 State Members, AWL Members and Affiliate Members may have additional refund policies in their respective terms and conditions in respect of the part of the registration fees that are in addition to the National Capitation Fee.

## **11.4 Transaction fees**

11.4.1 Online transaction fees (currently 2% + \$1.60) for the National Capitation Fee are absorbed by WPA. However, WPA reserves the right to change this and pass this cost on the Members.

## **11.5 Payment is made directly**

11.5.1 By virtue of the automated financial system in the WPA MemberPool, capitation fees and levies set by each hierarchy entity (i.e. national, state, association, club) are split and paid directly to the corresponding entity. No party will normally hold funds on behalf of another entity.

## **12 Non-Member activities**

### **12.1 Activities run the Affiliate Members**

12.1.1 In respect of events that:

- (a) occur once in a calendar year for no more than one day in duration; and
- (b) are approved by WPA as an event under this section 12.1.1,

Affiliate Members may allow people to participate in the event without registering as an Individual Member, provided that the Affiliate Member collects and includes in the WPA database the minimum required personal data fields of all non-Member participants that are involved in the event.

12.1.2 Persons participating in an event as a non-Member under this section are not official Members of WPA but may, if applicable, receive coverage under the WPA insurance scheme for the specific event only (see WPA website for further details).

12.1.3 Listed participants are reported to the Australian Sports Commission as 'exposure'.

### **12.2 Non-Member registration directly with WPA**

12.2.1 WPA has also made available additional classes of individual registration within the WPA database, as set out in Annexure E. These classes are not Memberships and do not receive the benefits of Members. Individuals register directly with WPA (not through any State Member or Affiliate Member). These classes cannot be used by State Members, AWL Members or Affiliate Members when registering members.

## Annexure A Individual Membership Categories

| Category           | Membership Type   | Duration        | Eligibility & Participation  |
|--------------------|-------------------|-----------------|--|
| Platinum           | Adult             | Membership Year | Participation in all competitions and events (Formal Competitions, Informal Events and Sanctioned Events)  |
|                    | Junior            |                 |  |
| Gold               | All ages          | Membership Year | Participation in all competitions and events (Formal Competitions, Informal Events and Sanctioned Events) but for non-active players only (e.g. non-playing coaches and referees)  |
| Silver             | Adult             | Membership Year | Participation in Informal Events and Sanctioned Events (not Formal Competitions)   |
|                    | Junior            |                 |  |
| 8-game             | Adult             | 8 games         | Cannot participate in WPA events, such as the National State Championships, Australian Youth Championships and the AWL. Entitles participation in 8 games only (of a category of game permitted by the relevant State Member / Affiliate Member for this membership category). Must use Rev Sport competition platform to count the 8 games. Category used for FIFO workers / school students or a casual who cannot commit to full season. At the conclusion of the 8 games the person becomes unfinancial and will need to register to upgrade their membership class to continue playing. |
|                    | Junior            |                 |  |
| Bronze             | Adult             | 12 months       | Sanctioned Events only (e.g. national participation programs)  |
|                    | Junior            | 12 months       |  |
|                    | Volunteer         | 12 months       | Non-playing volunteers, parents, supporters  |
|                    | School            | 12 months       | Sanctioned Events that are run by schools only   |
|                    | Temporary Adult   | 14 days         | Trial membership - come and try. After 14 days, the member will need to register into a relevant payment class to continue participating in the sport.   |
|                    | Temporary Junior  | 14 days         |  |
| Categorised Player | All ages          | Membership Year | High-Performance squad players who do not compete in Formal Competitions. Approved by the GM - High Performance WPA only. Directly register with WPA (category not available to State/Affiliate registrations) where appropriate in the circumstances.   |
| Life               | State Life Member | Lifetime        | In recognition of significant or outstanding achievement or contribution to the sport.   |
|                    | WPA Life Member   | Lifetime        |  |

**Adult:** Aged 19 or more as at 31 December in the Membership Year. **Junior / School:** Aged 18 or less as at 31 December in the Membership Year.

## Annexure B Membership Benefits

| Benefit categories                                      | Life Member | Individual Member* |                 |           |           |           | Affiliate Member |
|---|-------------|--------------------|-----------------|-----------|-----------|-----------|------------------|
|   |             | Platinum           | Gold            | Silver    | 8-game    | Bronze    |                  |
| WPA Insurance Scheme (see WPA website details)          | ✓           | ✓                  | ✓               | ✓         | ✓         | ✓         | ✓                |
| WPA communications                                      | ✓           | ✓                  | ✓               | ✓         | ✓         | ✓         | ✓                |
| MemberPool Portal Profile                               | ✓           | ✓                  | ✓               | ✓         | ✓         | ✓         | ✓                |
| WPA Learning Centre                                     | ✓           | ✓                  | ✓               | ✓ Limited | ✓ Limited | ✓ Limited |                  |
| Member Rewards Programs (see WPA website)               | ✓           | ✓                  | ✓               | ✓         | ✓         | ✓         |                  |
| Participate in Sanctioned Events                        | ✓           | ✓                  | ✓ Official Only | ✓         | ✓         | ✓         |                  |
| Participate in Informal Events                          | ✓           | ✓                  | ✓ Official Only | ✓         | ✓         | X         |                  |
| Participate in Formal Competitions                      | ✓           | ✓                  | ✓ Official Only | X         | ✓ Limited | X         |                  |
| Access to performance pathways/selections               | ✓           | ✓                  | ✓ Official Only | X         | X         | X         |                  |
| Direct membership to State Member allowed               | X           | X                  | ✓               | X         | X         | X         |                  |
| Can register members via WPA MemberPool Database        |             |                    |                 |           |           |           | ✓                |
| Can enter teams into competitions / tournaments         |             |                    |                 |           |           |           | ✓                |
| Can apply for event / program sanctioning               |             |                    |                 |           |           |           | ✓                |
| Access to CompPool competition management functionality |             |                    |                 |           |           |           | ✓                |

\* Categorized Player memberships get the benefits of Platinum Members, although with the limitations set out in Annexure A.

## Annexure C National Capitation Fees

| Membership Category |                         | National Capitation Fee (inc GST)<br>1 Sep 2025 to 31 Aug 2026 |
|---------------------|-------------------------|--|
| Affiliate Member    |                         | \$95.43  |
| AWL Member          |                         | Nil  |
| Individual members  | Platinum                | \$78.74  |
|                     | Gold                    | \$47.71  |
|                     | Silver                  | \$41.72  |
|                     | 8 Game                  | \$42.43  |
|                     | Bronze Adult and Junior | \$5.12   |
|                     | Bronze Volunteer        | Nil  |
|                     | Bronze School           | Nil  |
|                     | Bronze Temporary        | Nil  |
|                     | Categorised Player      | Nil  |
|                     | State Life Member       | Nil  |
| Life Member         |                         | Nil  |

## ***Annexure D      Life Member Qualification Criteria***

For Life Membership, the emphasis must be on long, meritorious, extraordinary and outstanding service to WPA, furthering the interests of WPA. The individual contribution of the person being nominated must have been above and beyond what could be reasonably expected within the water polo community.

The sport of water polo is made up of athletes, administrators, coaches, technical officials and volunteers. As such, Life Membership must represent much more than just being part of an Australian team or the holding of office and the routine performance of that office.

The following criteria are considered:

- a. Length of service by the nominee to the sport of water polo in one or more of the following roles: an Athlete, Administrator, Coach, Technical Official or Volunteer (a minimum of 10 years combined service is required).
- b. The outstanding contribution the service has made to the growth, development and standing of the sport in the broader community.
- c. The service must be diligent, extraordinary and the applicant's achievements must be above and beyond what could reasonably be expected, within the water polo community.
- d. The nominee's service shall be recognised as having made a significant positive and lasting impact to the sport of water polo in Australia.
- e. The values and behaviours that the nominee has demonstrated in their ethical and exemplary service and their reputation and standing within the water polo and broader sport community.
- f. Any (other) factor considered relevant to life membership consideration by the Board.

## Annexure E Individual Non-Membership Categories

| Category                       | Membership Type                      | Eligibility & Participation   |
|--------------------------------|--------------------------------------|---|
| Aquatic Facility Payment Class | Gold Skill Upgrade                   | Payment class only available to Aquatic facility staff who are undertaking professional development to be able to run a water polo program (e.g. Learn to Polo, Flippa Ball, Deadly Polo etc). The staff members will register directly to WPA to gain access to the Water Polo Learning Centre (WPLC) to complete learning modules. They will have access to all of the WPLC but will not be classified as a Member of Water Polo Australia aside from for the purpose of facilitating their access to the aforementioned privileges in this definition. |
|                                | Program Participant Aquatic Facility | Payment class only available to participants at Aquatic Facilities who are participating in a water polo program run at the facility. The participant will be charged per program they enrol in. They will not become a Member of WPA but will be counted as an event participant through exposure.   |